

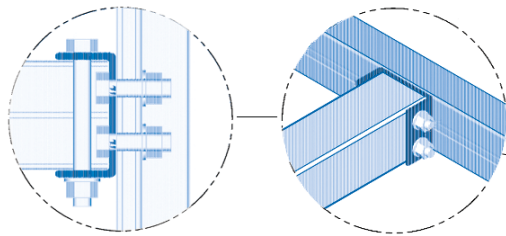
Introducing:

THE LI'L BERTHA®

Aluminum Boat Trailer
(Patent Pending)

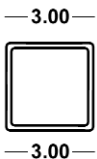
It will revolutionize
the Small Boat Trailer Market!

Pre-punched and Bent
for Quick Assembly!



② Tongue
Butt Channel

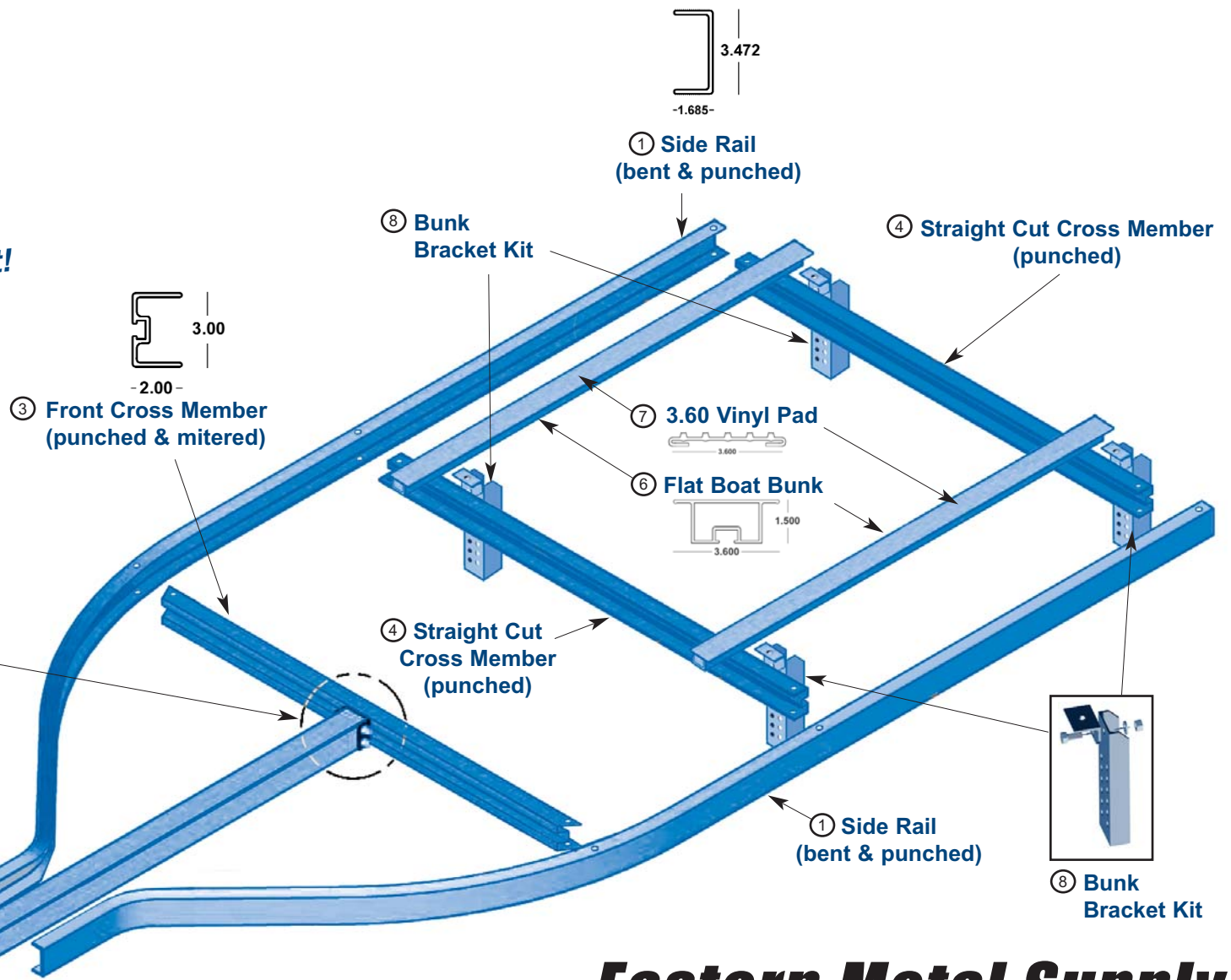
TOP VIEW (Cut Section)
Tongue Butt Channel &
Cross Member



⑤ Tongue
top left: Double Hollow
bottom left: Square Tube

Detailed Parts listing on back
ASSEMBLY VIEW
(Not to Scale)

TRL - lilbertha 05/19/08



Eastern Metal Supply

THE LI'L BERTHA® Aluminum Boat Trailer

(US Patents: US D543,491 S; US 7216,884, B2; US D544, 408 S)

Florida
3600 23rd Ave. South
Lake Worth, FL 33461
1-800-432-2204
(561) 588-4780-fax

North Carolina
2925 Stewart Creek Blvd.
Charlotte, NC 28216
1-800-343-8154
(704) 391-2267-fax

Texas
9400 Telge Road
Houston, TX 77095
1-800-996-6061
(281) 656-2297-fax

Missouri
13161 Lakefront Dr. Suite B
Earth City, MO 63045
1-888-822-6061
(314) 344-3349-fax

website: www.easternmetal.com

e-mail: info@easternmetal.com

Eastern Metal Supply

THE LI'L BERTHA® Aluminum Boat Trailer

(US Patents: US D543,491 S; US 7216,884, B2; US D544, 408 S)

Key Features:

Consumer Benefits:

- Competitive pricing • Low maintenance • High strength • Attractive appearance • Highly corrosion resistant
- Lightweight for low operating costs • No welds that might break

Fabricator Benefits:

- Competitive pricing • Pre-Fab for quick assembly • Lightweight for ease of fabrication, handling & cost of shipping
- Reduce internal costs & processes (no need to galvanize) • Inventory available for immediate shipment
- No costly and time consuming welding needed to assemble
- EMS stocks or has tooling for all of the aluminum parts necessary to build the Li'l Bertha Aluminum Boat Trailer
- Miscellaneous stock available: Fenders, Guide Poles, Step Pads, Bunks & Bunk Pads, Cross Members and I-Beams

Parts List:

TRL - lilbertha 05/19/08

<u>Description (Assembly Part #)</u>	<u>44" Model</u>	<u>52" Model</u>	<u>60" Model</u>
• Side Rail (#1) <i>Bent & Punched (6061-T6)</i>	1-44-001	1-52-001	1-60-001
• Tongue Butt Channel (#2)	1-00-010	1-00-010	1-00-010
• Front Cross Member (#3) <i>Miter cut to length (6061-T6)</i>	1-44-003	1-52-003	1-60-003
• Middle & Rear Cross Members (#4) <i>Punched & Straight Cut to Length (6061-T6)</i>	1-44-002	1-52-002	1-60-002
• Tongue (#5) <i>3" Double Hollow Square Tube with Radius x 24' (6061-T6)</i>	1-00-007	1-00-007	1-00-007
• Tongue (#5) <i>3" x 1/4" Square Tube with Radius x 18' (6061-T6)</i>	52-61-750	52-61-750	52-61-750
• 5' Bunk (#6) <i>24' Stock Lengths Available (6063-T6)</i>	1-00-005	1-00-005	1-00-005
• Bunk Pad (#7) <i>Soft Vinyl; 100' roll</i>	40-63-2400	40-63-2400	40-63-2400
• Bunk Bracket Kit (#8) <i>Punched & Cut w\SST bolt (6061-T6)</i>	1-00-004	1-00-004	1-00-004
• Light Bracket (not shown)	1-00-008	1-00-008	1-00-008 - coming soon
• 7-1/2" x 29-1/2" Round Fender (not shown)	1-00-009	1-00-009	1-00-009 - coming soon