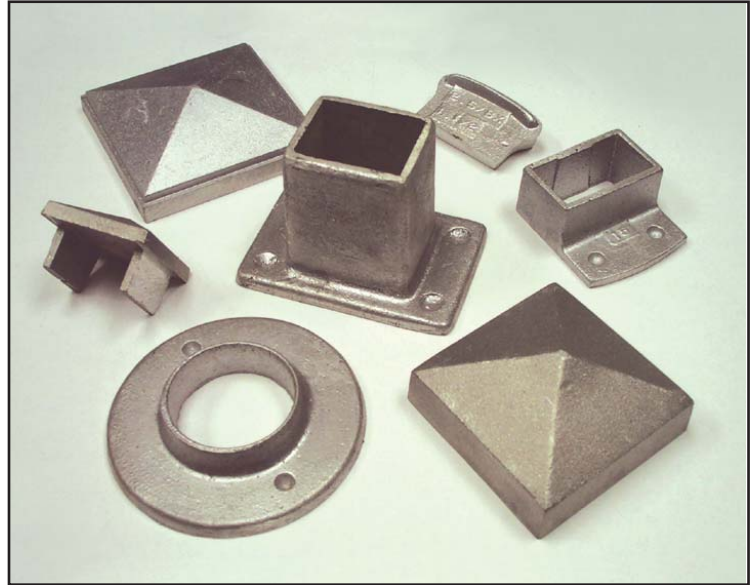


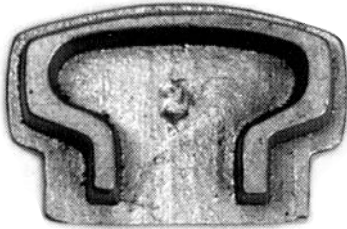
Castings

EMS is the perfect place to get the castings you need when you need them. Our four nationwide distribution centers will ship your order efficiently and economically with our **“Just-In-Time”** delivery. We also carry a full line of aluminum standards, as well as an array of custom shapes. Chances are, if we don't have it, you probably won't need it. Call the EMS nearest you today for quick and reliable service!



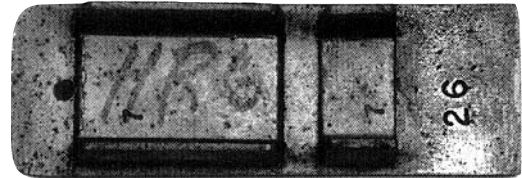
HR1 End Cap #75

21-00-100



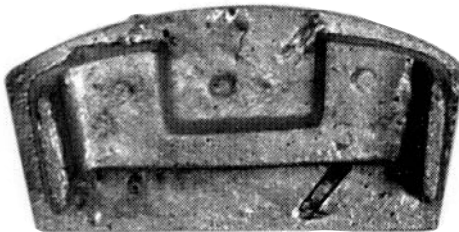
HR6 End Cap #26

21-00-125



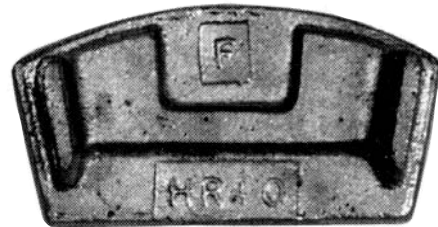
HR10 End Cap #34

21-00-105



HR10 Flat End Cap #34F

52-00-147



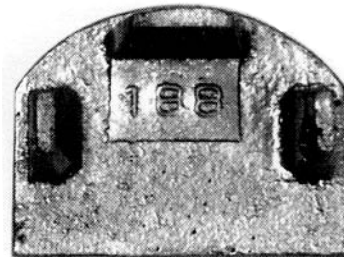
HR8 End Cap #96

21-00-131



HR14 End Cap #188

21-00-114



Castings 01



Eastern Metal Supply

Quality Shapes In Aluminum

EMS FL

1-800-432-2204

(561) 588-4780 - fax

EMS NC

1-800-343-8154

(704) 391-2267 - fax

EMS TX

1-800-996-6061

(281) 656-2297 - fax

EMS MO

1-888-822-6061

(314) 344-3349 - fax

Additional Locations: West Palm Beach & Lakeland, FL and Newark, DE

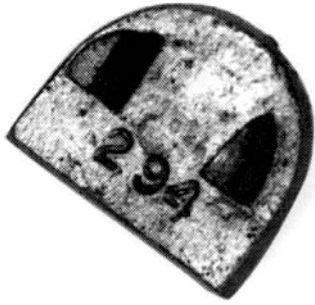
website: www.easternmetal.com

e-mail: info@easternmetal.com

version: 07/30/08

Handicap Rail End Cap #294

21-00-294



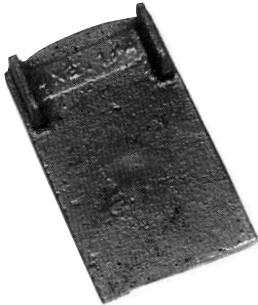
**2-1/4" x 4" End Cap #70
(more radius)**

21-00-145



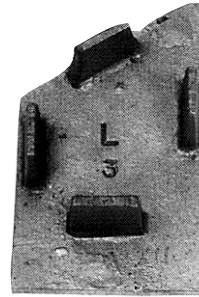
**2-1/4" x 4" End Cap #14
(less radius)**

21-00-146



2-1/4" x 4" Slant End Cap Left #3

21-00-311



2-1/4" x 6" End Cap #17

21-00-150



2-1/4" x 4" Slant End Cap Right #2

21-00-312



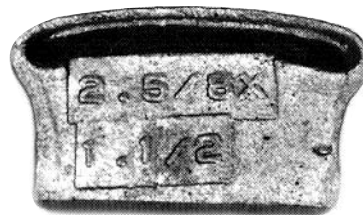
2-5/8" x 1" End Cap #28

21-00-135



2-5/8" x 1 1/2" End Cap #18

21-00-140



Castings 02



Eastern Metal Supply

Quality Shapes In Aluminum

EMS FL

1-800-432-2204

(561) 588-4780 - fax

EMS NC

1-800-343-8154

(704) 391-2267 - fax

EMS TX

1-800-996-6061

(281) 656-2297 - fax

EMS MO

1-888-822-6061

(314) 344-3349 - fax

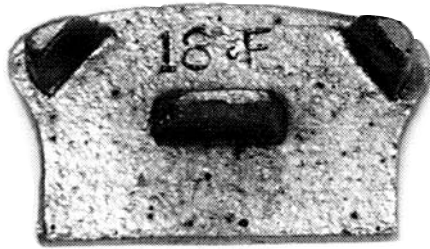
Additional Locations: West Palm Beach & Lakeland, FL and Newark, DE

website: www.easternmetal.com

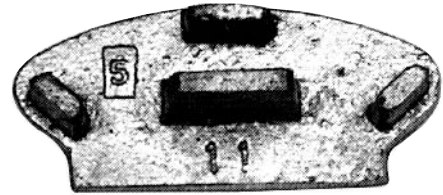
e-mail: info@easternmetal.com

version: 07/30/08

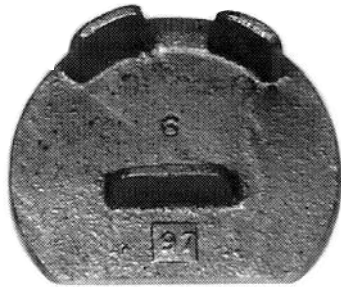
2-5/8" x 1-1/2" Flat End Cap #18F
21-00-140F



3" Oval End Cap #20
21-00-000



3" Round End Cap #97
21-00-120



3" Round End Cap #97
21-00-120 (NC)



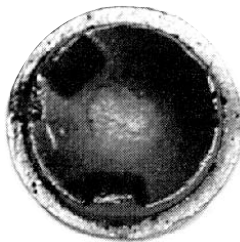
End Cap RW-30
2-5/8 x 1-1/2 Dixie Cap
21-00-245



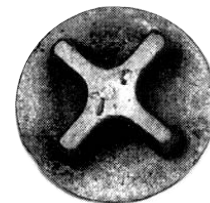
End Cap RW-29
2-5/8 x 1 Dixie End Cap
21-00-235



1-1/4" SCH 40 End Plug #74
21-00-180



1-1/2" SCH 40 End Plug #71
21-00-181



Castings 03



Eastern Metal Supply

Quality Shapes In Aluminum

EMS FL

1-800-432-2204

(561) 588-4780 - fax

EMS NC

1-800-343-8154

(704) 391-2267 - fax

EMS TX

1-800-996-6061

(281) 656-2297 - fax

EMS MO

1-888-822-6061

(314) 344-3349 - fax

Additional Locations: West Palm Beach & Lakeland, FL and Newark, DE

website: www.easternmetal.com

e-mail: info@easternmetal.com

version: 07/30/08