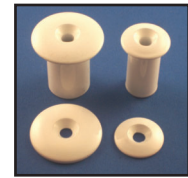


# Marine Hardware and Accessories

## Hard Top Bushings and Washers - Powder Coated Marine White

Custom size Bushings & Washers available/minimum quantities apply



Hard Top Bushings and Washers

<u>Stock Code</u>	<u>Description</u>
HTP-1	1-5/8 x 1-1/2 x 1 Hard Top Bushing
HTW-1	1-1/8 x 1/4 Hard Top Washer
HTW-2	2-1/2 x 3/8 Hard Top Washer

## Rod Butt

RODG1	Rod Butt for 1" pipe BDA Polished
-------	-----------------------------------



Rod Butt      Kite Pole      Stand Off

## Notched Kite Pole

57678-2A	1-1/2" Diameter x 11" BDA Polished - <b>NEW!</b>
----------	--

## Stand Off

SO-1250	1-1/4" Stand Off Polished BDA
---------	-------------------------------

## Cup Holders

<u>Stock Code</u>	<u>Description</u>
PCHE-BP	Black Plastic Cup Insert (w/ Stainless Ring on top) <i>Mates with PCHE</i>
T88585	Stainless Steel Cup Insert – Fits Yeti Cups - <b>NEW!</b> <i>Mates with PCHE</i>
T88586	Large Stainless Cup Holder – Fits Yeti Cups - <b>NEW!</b> <i>Mates with T88586-1</i>
PCHE	Cup Holder Mounting Ring (Polished and Anodized) <i>Accepts PCHE-BP and T88585</i>
T88586-1	BDA Large Cup Holder Ring - <b>NEW!</b> <i>Accepts T88586</i>



Top: PCHE-BP, T88585, T88586  
Bottom: PCHE, T88586-1



## Folding/Pivoting Back Rest

<u>Stock Code</u>	<u>Description</u>
FBRA-KIT	Folding/Pivoting Back Rest Assembly
FBRA-KIT-BLK (TX)	Folding/Pivoting Back Rest Assembly (Black) - <b>SPECIAL ORDER</b>

PBRP-404	4" 4 Hole Round Pad; WHITE (w/ 3/8" counter sunk center hole white plastic)
SPECIAL ORDER (PBRP-404-BK)	4" 4 Hole Round Pad; BLACK (w/ 3/8" counter sunk center hole black plastic)

50045	3/8" x 1" notched thread screw
BRP-250	2-1/2" Round Pad (w/ 3/8" threaded center hole polished & anodized)

FBRA-SLEEVE	Folding Back Rest Sleeve for 1"
-------------	---------------------------------



left-right: Folding/Pivoting Back Rest Assembly;  
FBRA-KIT; FBRA-KIT-BLK



left to right: PBRP-404; 50045; BRP-250



FBRA-SLEEVE  
(shown with 1" pipe inserted)

**Custom size pads built to your specifications  
(minimum quantity required)**

Marine 13



### EMS FL

1-800-432-2204  
(561) 588-4780 - fax

### EMS NC/DE/GA

1-800-343-8154  
(704) 391-2267 - fax

### EMS TX/AR

1-800-996-6061  
(281) 656-2297 - fax

### EMS MO/OH

1-888-822-6061  
(314) 344-3349 - fax

**Additional Locations:** West Palm Beach & Lakeland, FL; Newark, DE; Akron, OH, Van Buren, AR; Atlanta, GA and Dallas, TX

info@EasternMetal.com • www.EasternMetal.com • www.TigressOutriggers.com      **version:** 02/10/20

# Marine Hardware and Accessories

## Breakaway Pins

<u>Stock Code</u>	<u>Size In Inches</u>
BAP-750	3/4
BAP-1000	1
BAP-1250	1-1/4
BAP-1500	1-1/2
BAP-2000	2
BAP-2500	2-1/2



Breakaway Pins

## Pivoting Breakaway Pin

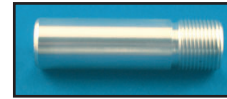
<u>Stock Code</u>	<u>Size In Inches</u>
PIVPIN-750	Pivoting breakaway pin for 3/4" pipe



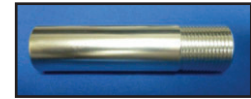
Pivoting Breakaway Pin

## Threaded Antenna Boss

<u>Stock Code</u>	<u>Size In Inches</u>
TAB-1	3.5 (1"-14 Thread / .500 Through Hole Size)



Threaded Antenna Boss



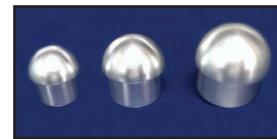
Threaded Antenna Mount

## Threaded Antenna Mount

<u>Stock Code</u>	<u>Size In Inches</u>
TAM-1	4" (3/4" I.D. and 1" of threads)

## End Caps

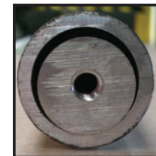
<u>Stock Code</u>	<u>Size In Inches</u>
APC-750	3/4
APC-100	1
APC-125	1-1/4
APC-150	1-1/2
APC-200	2



End Caps

## Plug Boss

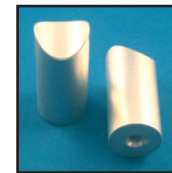
52-63-44068	3/4" Plug Boss for 3/4 sch 40 pipe 1/4 -20 threaded center hole; for attachment of grab rails
-------------	--



3/4" Plug Boss; Inserted into pipe

## Hand Rail Boss - Bright Dip Anodized

<u>Stock Code</u>	<u>Size In Inches</u>
HRB-2	1 x 1-3/8 - <b>NEW!</b>
HRB-1	1 x 1-7/8



Hand Rail Boss

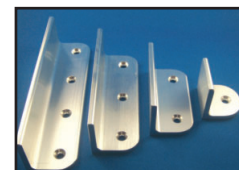
## Brushed Mounting Angles (2 x 2 x 1/4)

<u>Stock Code</u>	<u>Size In Inches</u>	<u>Fastener</u>
MA-151	2 (1 hole)	1/4
MA-402	4 (2 hole)	1/4
MA-603	6 (3 hole)	1/4
MA-804	8 (4 hole)	1/4
25-BD-300	2 x 2 x 1/4 Arch Angle x 20'	6 pcs/box

Used to fabricate Brushed Mounting Angle

## Polished Mounting Angles (2 x 2 x 1/4)

<u>Stock Code</u>	<u>Size In Inches</u>	<u>Fastener</u>
PMA-402	4 (2 hole)	1/4
MF-MA-402	4 (2 hole; Mill Finish)	5/16 (no counter sink) - <b>NEW!</b>
PMA-603	6 (3 hole)	1/4
MF-MA-603	6 (3 hole; Mill Finish)	5/16 (no counter sink) - <b>NEW!</b>
PMA-255	1-3/8" x 2" x 5-1/2" (4 hole)	1/4



Mounting Angles



PMA-255 Mounting Angle

Marine 14



### EMS FL

1-800-432-2204  
(561) 588-4780 - fax

### EMS NC

1-800-343-8154  
(704) 391-2267 - fax

### EMS TX

1-800-996-6061  
(281) 656-2297 - fax

### EMS MO

1-888-822-6061  
(314) 344-3349 - fax

**Additional Locations:** West Palm Beach & Lakeland, FL; Newark, DE; Akron, OH, Van Buren, AR; Atlanta, GA and Dallas, TX

info@EasternMetal.com • www.EasternMetal.com • www.TigressOutriggers.com **version:** 04/20/20

# Marine Hardware and Accessories

## Grip Rail - **NEW!**

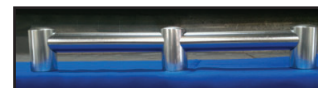
<u>Stock Code</u>	<u>Description</u>	<u>Stock Code</u>	<u>Description</u>
GR-12	12" Polished & Anodized	GRM-12	12" Mill Finish
GR-14	14" Polished & Anodized	GRM-14	14" Mill Finish
GR-18	18" Polished & Anodized	GRM-18	18" Mill Finish
GR-24	24" Polished & Anodized	GRM-24	24" Mill Finish
GR-36	36" Polished & Anodized	GRM-36	36" Mill Finish



Grip Rails

## Bow Rail Components

<u>Stock Code</u>	<u>Description</u>	<u>Fastener</u>
BREC	Bow Rail End Cap for 3/4" Pipe; 2.25" High	1/4
BRSS	Bow Rail Mid Span Support for 3/4" Pipe; 2.25" High	1/4
GREC	Grip Rail End Cap for 3/4" pipe; 2.625" High	1/4
GRMS	Grip Rail Mid Span Support for 3/4" pipe; 2.625" High	1/4



Left: Bow Rail End Cap  
Right: Bow Rail Mid Span Support

## Sleeves - Outside BDA Polished

<u>Stock Code</u>	<u>Description</u>
SLV-1-6	1 x 6
SLV-1.250-6	1-1/4 x 6
SLV-1.25-8.5	1-1/4 x 8-1/2
SLV-1.50-6	1-1/2 x 6
SLV-1.50-8.5	1-1/2 x 8-1/2
SPECIAL ORDER	1-1/2 x 10 - ( <u>SLV-1.50-10</u> )
SLV-2-6	2 x 6
SLV-2-8	2 x 8
SLV-2-10	2 x 10
SLV-2-12	2 x 12



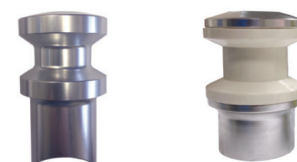
Sleeves - Outside

## Sleeves - Outside Mill Finish

<u>Stock Code</u>	<u>Description</u>
SLV-1.50-6MF	1-1/2 x 6
SLV-1.50-10MF	1-1/2 x 10
SPECIAL ORDER	2 x 8 - ( <u>SLV-2-8MF</u> )
SLV-2-10MF	2 x 10
SLV-2-12MF	2 x 12

## Ski Ball - **NEW!**

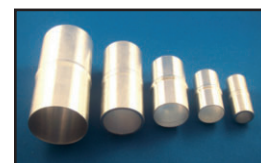
<u>Stock Code</u>	<u>Description</u>
SB1	Ski Ball coped for 1-1/2 pipe BDA Made to sleeve 2" SCH 80
ST-SBA	Ski Ball with Nylon Insert; Fits 2" SCH 80



Ski Ball: SB1      Ski Ball: ST-SBA

## Pipe Aligners

<u>Stock Code</u>	<u>Description</u>
PA-0752	3/4
PA-1002	1
PA-1253	1-1/4
PA-1505	1-1/2
PA-2005	2



Pipe Aligners

Marine 15



### EMS FL

1-800-432-2204  
(561) 588-4780 - fax

### EMS NC

1-800-343-8154  
(704) 391-2267 - fax

### EMS TX

1-800-996-6061  
(281) 656-2297 - fax

### EMS MO

1-888-822-6061  
(314) 344-3349 - fax

Additional Locations: West Palm Beach & Lakeland, FL; Newark, DE; Akron, OH, Van Buren, AR; Atlanta, GA and Dallas, TX

info@EasternMetal.com • www.EasternMetal.com • www.TigressOutriggers.com      version: 05/08/20

# Marine Hardware & Accessories

## Folding Foot Rest Hardware

### Stock Code

### Description

FR-ANGLE

Flat Surface Mount (Sold in Sets, Left and Right)

*Each side includes: 1) 2 x 2 x 3 Hinge Block; 1) 5/16 Bolt; 2) Delrin Washers; 1) 1" Female Pin*

BOFR

Bolt On Foot Rest Hardware

*Sold in sets (1 Right & 1 Left) Includes (2) 1" Male Pins (1) 5/16" Bolt*

FRP-WELD-ON

Weld On Blade Mount (polished blade) (drops past horizontal)

*includes: 1) 2 x 3 Hinge Block; 1) 5/16 Bolt; 2) Delrin Washers; 1) 1" Female Pin*

FR-WELD-ON

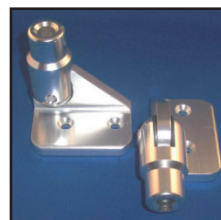
Weld On Blade Mount (brushed blade) (drops past horizontal)

*includes: 1) 2 x 3 Hinge Block; 1) 5/16 Bolt; 2) Delrin Washers; 1) 1" Female Pin*

FR-WELD-ON-90

Weld On Blade Mount (brushed blade) (drops to horizontal)

*includes: 1) 2 x 2-1/2 Hinge Block; 1) 5/16 Bolt; 2) Delrin Washers; 1) 1" Female Pin*



FR-Angle



BOFR



left: FR-Weld-On; right: FR-Weld-On-90

## Ear Mounts

### Stock Code

### Description

EM-750

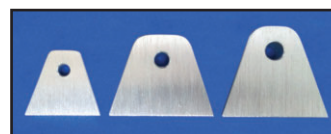
3/4" with 1/4" Hole

EM-100

1" with 5/16" Hole

EM-200

1-1/4 or 1-1/2" with 3/8" Hole



Ear Mounts

## Folding Bench Seat Hardware

### Stock Code

### Description

FBSH-T

Folding Bench Seat Hardware

*includes: 1) 1/4 x 2 x 2 T-Stock Hinge; 1) 1/4" Socket Cap Screw; 2) Delrin Washers; 1) 3/4" Female Pin; 1) Retaining Clip;*

*1) Retaining Clip Mount & Screw*



FBSH-T

FBSH-Angle

Mounting Angle

*Sold in pairs with 1" female pin, right & left for surface mounting Seat to Transom, etc.*



FBSH-Angle

## Hinge Bracket

### Stock Code

### Blade Thickness

HB-250

1/4"

HB-375

3/8"

HB-500

1/2"

HB3L

3 Leg Bracket: 1/4" Outside Legs & 3/8" Inside Leg



Hinge Bracket

## Alignment Pins

### Stock Code

### Size

### Slot Size (Through Hole Size)

ALP-100

1"

1/2"

ALP-125

1-1/4"

3/4"

ALP-150

1-1/2"

3/4"

ALP-200

2"

1"

ALP-250

2-1/2"

1-3/4"



3 Leg Bracket



Alignment Pins

Marine 16



### EMS FL

1-800-432-2204

(561) 588-4780 - fax

### EMS NC

1-800-343-8154

(704) 391-2267 - fax

### EMS TX

1-800-996-6061

(281) 656-2297 - fax

### EMS MO

1-888-822-6061

(314) 344-3349 - fax

Additional Locations: West Palm Beach & Lakeland, FL; Newark, DE; Akron, OH, Van Buren, AR; Atlanta, GA and Dallas, TX

info@EasternMetal.com • www.EasternMetal.com • www.TigressOutriggers.com version: 01/16/18



# Marine Hardware & Accessories

## Female Pins

<u>Stock Code</u>	<u>Size In Inches</u>	<u>Slot Size</u>	<u>Fastener</u>
FP-75375	3/4	3/8	1/4* (Wide Slot)
FP-100375	1	3/8	5/16
FP-100500	1	1/2	5/16* (Wide Slot)
FP-125500	1-1/4	1/2	3/8
FP-125500WS	1-1/4	5/8	3/8* (Wide Slot)
FP-150500	1-1/2	1/2	3/8
FP-150500WS	1-1/2	.630	3/8* (Wide Slot)
FP-200750	2	3/4	1/2* (Wide Slot)



Female Pins

Bolts included with all Female Pins

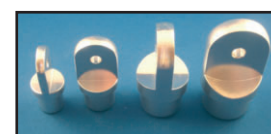
\*These Pins are supplied with Washers

*Female & Male Pin shown connected;  
Not sold together; sold individually*



## Male Pins

<u>Stock Code</u>	<u>Size In Inches</u>	<u>Fastener</u>
MP-750	3/4	1/4
MP-1000	1	5/16
MP-1250	1-1/4	3/8
MP-1500	1-1/2	3/8
MP-2000	2	1/2



Male Pins

## Quick Release Pin

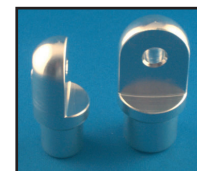
QRP-1	1" Quick Release Pin; for 2 locking positions 0° and 90°
-------	--



Quick Release Pin

## Half Pins

<u>Stock Code</u>	<u>Size In Inches</u>	<u>Fastener</u>
HP-750	3/4	3/8
HP-1000	1	3/8
HP-1250	1-1/4	3/8
HP-1500	1-1/2	3/8



Half Pins

## Tower Boss

<u>Stock Code</u>	<u>Size In Inches</u>	<u>Fastener</u>
TB-750	3/4 x 1	1/4"-20 (one end)
TB-1312-10	1-5/16 x 1	3/8"-16 (one end)
TB-1312-15	1-5/16 x 1-1/2	3/8"-16 (one end)
TB-1625-20	1-5/8 x 2	3/8"-16 (one end)
SPECIAL ORDER TB-1875-20	1-7/8 x 2	3/8"-16 (one end)



Tower Boss

## Threaded Knob

<u>Stock Code</u>	<u>Description</u>	<u>Fastener</u>
BK-KNOB	Black Threaded Knob For Tower Boss, Femal Pin Connections	3/8"-16 (one end)



Threaded Knob

Marine 17



### EMS FL

1-800-432-2204  
(561) 588-4780 - fax

### EMS NC

1-800-343-8154  
(704) 391-2267 - fax

### EMS TX

1-800-996-6061  
(281) 656-2297 - fax

### EMS MO

1-888-822-6061  
(314) 344-3349 - fax

Additional Locations: West Palm Beach & Lakeland, FL; Newark, DE; Akron, OH, Van Buren, AR; Atlanta, GA and Dallas, TX

info@EasternMetal.com • www.EasternMetal.com • www.TigressOutriggers.com version: 09/20/18