

Round Marine Pads - (Packaged in pairs)

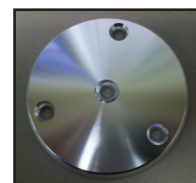
POLISHED PADS

3-Hole Round Pads - Bright Dipped POLISHED - Standard Edge

<u>Stock Code</u>	<u>Size in Inches</u>	<u>Fastener</u>
D-253	2.5	#10
52-63-6781	2.5	#10 (5/16 threaded center hole)
D-253-TCH	2.5	#10 (3/8 - 16 threaded center hole) - NEW!
D-303	3	#10
D-303A	3	1/4
D-303-NCS	3	1/4 (NO countersink on holes)
D-353	3.5	1/4
D-353-NCS	3.5	1/4 (NO countersink on holes)
D-403	4	1/4
D-403-NCS	4	1/4 (NO countersink on holes) - NEW!
D-403-250	4	1/4 (1-1/4 center hole)
D-403-375	4	1/4 (3/8 center hole - NOT threaded)
D-453	4.5	1/4
D-453-NCS	4.5	1/4 (NO countersink on holes)
D-503	5	1/4

D = Polished
B = Brushed

D or B Standard Edge Style



4" 3-Hole Round Pad
Bright Dipped Polished (D)

EP Edge Style



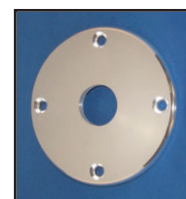
3 Hole Round Pads - Bright Dipped POLISHED - "EP" STYLE

<u>Stock Code</u>	<u>Size in Inches</u>	<u>Fastener</u>
EP-303	3	1/4
EP-353	3.5	1/4
EP-403	4	1/4
EP-453	4.5	1/4

4-Hole Round Pads - Bright Dipped POLISHED - Standard Edge

<u>Stock Code</u>	<u>Size in Inches</u>	<u>Fastener</u>
D-304	3	#10
D-354	3.5	1/4
D-404	4	1/4
D-404-NCS	4	1/4 (NO countersink on holes)
D-404-250	4	1/4 (1-1/4 center hole)
D-404OS	4	1/4 (offset)
D-454	4.5	1/4
D-504	5	1/4
SPECIAL ORDER	5 (D-504-250)	1/4 (1-1/4 center hole)

4-Hole Round Pad - Bright Dipped Polished (D) 1-1/4" center hole

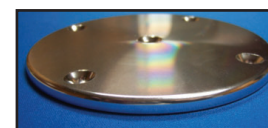


4 Hole Round Pads - Offset Bright Dipped Polished (D)



4 Hole Round Pads - Bright Dipped POLISHED - "EP" STYLE

<u>Stock Code</u>	<u>Size in Inches</u>	<u>Fastener</u>
EP-354	3.5	1/4
EP-404	4	1/4
EP-404-150	4	1/4 (1-1/2" center hole)
EP-454	4.5	1/4
EP-454-150	4.5	1/4 (1-1/2" center hole)
EP-504	5	1/4



4 Hole Round Pads (EP Style) Bright Dipped Polished

5 Hole Round Pads - Bright Dipped POLISHED - "EP" STYLE

<u>Stock Code</u>	<u>Size in Inches</u>	<u>Fastener</u>
EP-505	5	1/4

Center Hole Only Round Pads - Bright Dipped POLISHED - "D" STYLE

<u>Stock Code</u>	<u>Size in Inches</u>	<u>Description</u>
D-300-CH	3 x .250	1/4 Center Hole (1/4 fastener)
D-400-CH	4 x .250	1/4 Center Hole (1/4 fastener)
D-401 (NC)	4 x .250	1/4 Center Hole (1/4 fastener)
D-500-CH	5 x .250	1/4 Center Hole (1/4 fastener)
D-501 (NC)	5 x .250	1/4 Center Hole (1/4 fastener)



4" Center Hole Only Round Pad

Marine 07



EMS FL

1-800-432-2204
(561) 588-4780 - fax

EMS NC

1-800-343-8154
(704) 391-2267 - fax

EMS TX

1-800-996-6061
(281) 656-2297 - fax

EMS MO

1-888-822-6061
(314) 344-3349 - fax

Additional Locations: West Palm Beach & Lakeland, FL; Newark, DE; Akron, OH, Van Buren, AR; Atlanta, GA and Dallas, TX

info@EasternMetal.com • www.EasternMetal.com • www.TigressOutriggers.com **version:** 04/13/20

Round Marine Pads - (Packaged in pairs)

D = Polished
B = Brushed

HIGH POLISHED PADS

3-Hole Round Pads - High Polished "EP" Style

Stock Code	Size in Inches	Fastener
PEP-253	2.5	#10
PEP-303	3	1/4
PEP-353	3.5	1/4
PEP-403	4	1/4
PEP-403-375	4	1/4 (3/8" thick) - NEW!
PEP-403-250	4	1/4 (1-1/4" center hole)
PEP-453-375	4.5	1/4 (3/8" thick)
PEP-45337515	4.5	5/16 (3/8" thick; 1-1/2" center hole) - NEW!
PEP-503	5	1/4
PEP-503-375	5	1/4 (3/8" thick) - NEW!

EP Edge Style



D or B Standard Edge Style



4-Hole Round Pads - High Polished "EP" Style

PEP-404	4	1/4
PEP-454	4.5	1/4
PEP-454-375	4.5	1/4 (3/8" thick) - NEW!
PEP-45437515	4.5	5/16 (3/8" thick; 1-1/2" center hole) - NEW!
PEP-504-375	5	5/16 (3/8" thick) - NEW!
PEP-504-3752	5	5/16 (3/8" thick; 2" center hole) - NEW!



4" Center Hole
Only Round Pad

5-Hole Round Pads - High Polished "EP" Style

EP-505OS	5	5/16 (3/8" thick; offset) - NEW!
PEP-505OS225	5	5/16 (3/8" thick; offset) - NEW! w/ 2-1/4 center hole)

Center Hole Only Round Pads - High Polished "D" Style

D-400-TCH-HP	4 x .375	3/8 Threaded Center Hole
--------------	----------	--------------------------

4" 4-Hole Round
Pad Bright Dipped
Brushed (B)



BRUSHED PADS

3-Hole Round Pads - Bright Dipped BRUSHED Standard Edge

Stock Code	Size in Inches	Fastener
B-303A	3	1/4
B-353	3.5	1/4
B-400-TCH	4	3/8 (Threaded Center Hole)
B-403	4	1/4
B-453	4.5	1/4
B-503	5	1/4

3 Hole Round Pads - Bright Dipped BRUSHED "EP" STYLE - **NEW!**

Stock Code	Size in Inches	Fastener
EPB-353	3-1/2	1/4
EPB-403	4	1/4
EPB-453	4-1/2	1/4
EPB-503	5	1/4

4-Hole Round Pads - Bright Dipped BRUSHED Standard Edge

B-404	4	1/4
B-404OS	4	1/4 (offset)
B-454	4.5	1/4
B-504	5	1/4

4 Hole Round Pads - Bright Dipped BRUSHED "EP" STYLE - **NEW!**

Stock Code	Size in Inches	Fastener
EPB-354	3-1/2	1/4
EPB-404	4	1/4
EPB-404OS	4	1/4 (offset)
EPB-454	4-1/2	1/4
EPB-504	5	1/4

Center Hole Only Round Pads

Bright Dipped BRUSHED - "D" STYLE

11386-12	3 x .375	3/8 Threaded Center Hole (Light Machined)
D-400-TCH	4 x .375	3/8 Threaded Center Hole (Light Machined)
B-400-TCH	4 x .375	3/8 Threaded Center Hole (Brushed)

Custom size pads built to your specifications
(minimum quantity required)

Marine 08



EMS FL

1-800-432-2204
(561) 588-4780 - fax

EMS NC

1-800-343-8154
(704) 391-2267 - fax

EMS TX

1-800-996-6061
(281) 656-2297 - fax

EMS MO

1-888-822-6061
(314) 344-3349 - fax

Additional Locations: West Palm Beach & Lakeland, FL; Newark, DE; Akron, OH, Van Buren, AR; Atlanta, GA and Dallas, TX

info@EasternMetal.com • www.EasternMetal.com • www.TigressOutriggers.com version: 04/13/20

Round Marine Pads - (Packaged in pairs)

MILL FINISH PADS

3-Hole Round Pads - MILL FINISH - Standard Edge

<u>Stock Code</u>	<u>Size in Inches</u>	<u>Fastener</u>
D-63-6781-MF	2.5	#10 (5/16 Threaded Center Hole)
D-253-TCH-MF	2.5	#10 (3/8 - 16 threaded center hole) - NEW!
<i>(mates with D-403-375 for folding/pivoting backrest supports)</i>		
D-303-MF	3	#10
D-303-MF-NCS	3	#10 (no counter sink) - NEW!
SPECIAL ORDER	3 (<i>D-303A-MF</i>)	1/4
D-353-MF	3.5	1/4
D-353-312-MF	3.5	5/16 (no counter sink) - NEW!
SPECIAL ORDER	3.5 (<i>D-353-NCS-MF</i>)	1/4 (no counter sink)
D-403-MF	4	1/4
D-403-NCS-MF	4	1/4 (no counter sink)
D-403-312-MF	4	5/16 (no counter sink) - NEW!
D-453-MF	4.5	1/4
D-453-NCS-MF	4.5	1/4 (no counter sink)
D-453-312-MF	4.5	5/16 (no counter sink) - NEW!
MFEP-453-150CH	4.5	#10 (1-1/2 center hole; 5/16 no counter sink holes) - NEW!
D-503-MF	5	1/4
D-503-312-MF	5	5/16 - NEW!

D Standard Edge Style



4-Hole Round Pads - MILL FINISH - Standard Edge

<u>Stock Code</u>	<u>Size in Inches</u>	<u>Fastener</u>
D-304-MF	3	#10
SPECIAL ORDER	3.5 (<i>D-354-MF</i>)	1/4
D-404-MF	4	1/4
MFEP-404-150CH	4	5/16 (1-1/2" center hole; no counter sink) - NEW!
D-454-MF	4.5	1/4
MFEP-454-150CH	4.5	5/16 (1-1/2" center hole; no counter sink) - NEW!
D-504-MF	5	1/4

EP Edge Style



3 Hole Round Disc - MILL FINISH - "EP" STYLE

<u>Stock Code</u>	<u>Size in Inches</u>	<u>Fastener</u>
EP-303-MF	3	1/4
EP-353-MF	3.5	1/4
EP-403-MF	4	1/4

4 Hole Round Disc - MILL FINISH - "EP" STYLE

<u>Stock Code</u>	<u>Size in Inches</u>	<u>Fastener</u>
EP-404-MF	4	1/4



4" Center Hole Only Round Pad High Polished

Center Hole Only Round Disc - MILL FINISH - "D" STYLE

<u>Stock Code</u>	<u>Size in Inches</u>	<u>Description</u>
D-375-CH-MF	3 x .375	3/8 Threaded Center Hole
D-400-TCH-MF	4 x .375	3/8 Threaded Center Hole
D-500-TCH-MF	5 x .375	3/8 Threaded Center Hole

Custom size pads built to your specs (minimum quantity required)

Marine 09



EMS FL

1-800-432-2204
(561) 588-4780 - fax

EMS NC

1-800-343-8154
(704) 391-2267 - fax

EMS TX

1-800-996-6061
(281) 656-2297 - fax

EMS MO

1-888-822-6061
(314) 344-3349 - fax

Additional Locations: West Palm Beach & Lakeland, FL; Newark, DE; Akron, OH, Van Buren, AR; Atlanta, GA and Dallas, TX

info@EasternMetal.com • www.EasternMetal.com • www.TigressOutriggers.com version: 08/31/20

Rectangular Marine Pads - (Packaged in pairs)

POLISHED PADS

2-Hole Rectangular (Oblong/Shape) Pads

Bright Dipped POLISHED

Stock Code	Size in Inches	Fastener
RP-1535-2	1-1/2 x 3-1/2	1/4
RP-2040-2	2 x 4	1/4

4-Hole Rectangular (Oblong/Shape) Pads

Bright Dipped POLISHED

Stock Code	Size in Inches	Fastener
SPECIAL ORDER	1-1/2 x 3-1/2	#10 (<i>RP-1535-4</i>)
RP-2040-4	2 x 4	1/4
RP-2540-4	2-1/2 x 4	1/4
RP-3040-4	3 x 4	1/4
RP-3040-41250	3 x 4	1/4 (1-1/4 center hole)
RP-3045-4	3 x 4-1/2	1/4

More in next column top right →

4-Hole Rectangular (Oblong/Shape) Pads

Bright Dipped POLISHED - continued

Stock Code	Size in Inches	Fastener
RP-3550-4	3-1/2 x 5	1/4
RP-3550-4-375	3-1/2 x 5 (.375 thick)	1/4 - NEW!
RP-4060-4	4 x 6 x 3/8	1/4
RP-4060-41OB	4 x 6 x 1/4	1/4
RP-4060-425NCH	4 x 6 x 1/4	1/4 (no center hole) - NEW!
RP-4060-4OB	4 x 6 x 3/8	5/16

4-Hole Rectangular (Radius Corner) Pads

Bright Dipped POLISHED

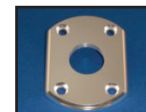
Stock Code	Size in Inches	Fastener
SPECIAL ORDER	2 x 4	1/4 (<i>RP-2040-4RC</i>)
RP-3040-4RC	3 x 4	1/4



2 Hole Rect. Pads
Oblong/Shape



4 Hole Rect.
Oblong/Shape Pads
Polished



4 Hole Rect.
Oblong/Shape Pads
Polished (1-1/4 center hole)



4 Hole Rect.
Radius Corner Pads



4 Hole Rect.
Radius Corner Pads Brushed

HIGH POLISHED PADS

Rectangular (Oblong/Shape) Pads - HIGH POLISHED - "EP" STYLE

Stock Code	Size in Inches	Fastener
PEP-3040-4RC	3 x 4 x .250	4 Holes (1/4"): Radius Corner; NOT Oblong
PEP-3040-4OB	3 x 4 x .250	4 Holes (1/4"): Oblong
PEP-3040-4NCH	3 x 4 x .375	4 Holes (1/4"): no center hole - NEW!
PEP-3045-4OB	3 x 4.375 x .250	4 Holes (1/4"): Oblong
PEP-3045-4OB5	3 x 4.375 x .250	4 Holes (1/4"): Oblong; 1-1/2" Center Hole
RP-4060-425	4 x 6 x .250	4 Holes (1/4"): Oblong; 2-1/2" Center Hole
PEP-4060-4OB	4 x 6 x .375	4 Holes (1/4"): no center hole - NEW!
RC-4060-4OB	4 x 6 x .375	4 Holes (5/16"): Countersunk; 2" Center Hole (6463-T66)
RP-4060-4375	4 x 6 x .375	4 Holes (1/4"): Oblong; 2-1/2" Center Hole
RC-4565-4OB	4.5 x 6.5 x .250	4 Holes (5/16"): NO Countersink; (2-3/8" Center Hole (6463-T66)
RC-4565-4OBN	4.5 x 6.5 x .250	4 Holes (5/16"): NO Countersink (6463-T66)
RC-4565-4OB3	4.5 x 6.5 x .375	4 Holes (1/4"): NO Countersink; 3" Center Hole (6463-T66)
RC-4565-4OB2	4.5 x 6.5 x .375	4 Holes (1/4"): Countersunk; 2-3/8" Center Hole (6463-T66)
RP-5070-4OB	5 x 7 x .375	4 Holes (1/4"): Oblong
RP-5070-6OB	5 x 7 x .375	4 Holes (1/4"): Oblong with 6 Outside Holes

BRUSHED PADS

2-Hole Rectangular (Radius Corner) Pads - Bright Dipped BRUSHED

RB-2040-2	2 x 4	1/4
-----------	-------	-----

4-Hole Rectangular (Oblong/Shape) Pads - Bright Dipped BRUSHED

RB-2540-4	2-1/2 x 4	1/4
RB-3040-4OB	3 x 4	1/4
RB-3045-4-MF	3 x 4-1/2	1/4 (Brushed/No Anodize)
RB-3045-4	3 x 4-1/2	1/4
RB-3550-4	3-1/2 x 5	1/4
RB-4060-4	4 x 6 x 3/8	1/4
RB-4060-41OB	4 x 6 x 1/4	1/4

4-Hole Rectangular (Radius Corner) Pads - Bright Dipped BRUSHED

RB-2040-4	2 x 4	1/4
RB-2540-4R	2-1/2 x 4	1/4
RB-3040-4	3 x 4	1/4

Custom size pads built to your specifications
(minimum quantity required)

Marine 10



EMS FL

1-800-432-2204
(561) 588-4780 - fax

EMS NC

1-800-343-8154
(704) 391-2267 - fax

EMS TX

1-800-996-6061
(281) 656-2297 - fax

EMS MO

1-888-822-6061
(314) 344-3349 - fax

Additional Locations: West Palm Beach & Lakeland, FL; Newark, DE; Akron, OH, Van Buren, AR; Atlanta, GA and Dallas, TX

info@EasternMetal.com • www.EasternMetal.com • www.TigressOutriggers.com version: 04/13/20

Rectangular Marine Pads - (Packaged in pairs)

MILL FINISH PADS

D = Polished
B = Brushed

4-Hole Rectangular (Oblong/Shape) Pads - MILL FINISH

Stock Code	Size in Inches	Fastener
MFRP-4583-4	4 x 5.83	5/16 (no counter sink) - NEW!
MFRP-4060-4150	4 x 6	5/16 (1-1/2" center hole; no counter sink) - NEW!
MFRP-4060-2CH	4 x 6	5/16 (2" center hole; no counter sink) - NEW!

4-Hole Rectangular (Radius Corner) Pads - MILL FINISH

RP-3040-4RC-MF	3 x 4	1/4
----------------	-------	-----

Miscellaneous Marine Pads - (Packaged in pairs)

2-Hole Oval Pads

OP-2035-2	2 x 3.5 (brushed)	1/4
OP-2035-2P	2 x 3.5 (polished)	1/4
OP-2035-2P-MF	2 x 3.5 (mill finish)	1/4
MFOP-2035-2	2 x 3.5 (mill finish)	5/16 - NEW!
OP-2540-2B	2.5 x 4 (brushed)	1/4
OP-2540-2P	2.5 x 4 (polished)	1/4
OP-2540-2P-MF	2.5 x 4 (mill finish)	1/4



Oval Pads



Tear Drop Pads

Tear Drop Pads - Bright Dipped - Polished

Stock Code	Size in Inches	Fastener
TD-3040	2 x 3 (with countersunk hole)	1/4
TD-3040-MF	2 x 3 (with countersunk hole) - Mill Finish	1/4



Triangular Heart Pads



Heart Pad

Triangular Heart Pads

Stock Code	Size in Inches	Fastener
TP-353	3-1/2	1/4
HP-3040-3	3 x 4 (Polished)	1/4

Diamond Pads

DP-2035-3	2 x 3-1/2 (Polished)	1/4
DB-2035-3	2 x 3-1/2 (Brushed)	1/4
DB-2045-3	2 x 4-1/4 (Brushed)	1/4



Diamond Pads



Square Pad

Square Pad

SPECIAL ORDER <u>SB-222</u>	2 x 1/4	3/16
-----------------------------	---------	------

Outrigger Hard Top Pad

LHOP-875	Outrigger Hard Top Pad
LHOP-875MF	Outrigger Hard Top Pad (Mill Finish)
LHOP-875MF313	Outrigger Hard Top Pad (Mill Finish - 5/16 non counter sunk) - NEW!



Outrigger Hard Top Pad



Windshield Pad

Pad for Windshield Guard

EPWP-150	1-1/2 x 1/4 Round Pad (BDA; Lite Machining)
----------	---

Antenna Ratchet Mounting Pads

AP-320	3 x 2 x 1/4
AP-4	4 x 4 x 1/4



Antenna Ratchet Mounting Pads

Custom size pads built to your specs (minimum quantity required)

Marine 11



EMS FL

1-800-432-2204
(561) 588-4780 - fax

EMS NC

1-800-343-8154
(704) 391-2267 - fax

EMS TX

1-800-996-6061
(281) 656-2297 - fax

EMS MO

1-888-822-6061
(314) 344-3349 - fax

Additional Locations: West Palm Beach & Lakeland, FL; Newark, DE; Akron, OH, Van Buren, AR; Atlanta, GA and Dallas, TX

info@EasternMetal.com • www.EasternMetal.com • www.TigressOutriggers.com version: 06/18/20

Special Marine Pads

Round Pads - Bright Dipped POLISHED - Standard Edge

Stock Code	Size (Inches)	Description	Fastener
D-300-CH	3 x .250	Contains center hole only; countersunk	1/4
11386-12	3 x .375	Contains center hole only (threaded 3/8-16); countersunk	1/4
D-400-CH	4 x .250	Contains center hole only; countersunk	1/4
D-500-CH	5 x .250	Contains center hole only; countersunk	1/4

Round Pads - Bright Dipped BRUSHED - Standard Edge

Stock Code	Size (Inches)	Description
EB-250-CH	2.5 x .250	Contains NON-Threaded Center Hole Only (3/16"): NO Countersink (6463-T66)
EB-300-CH	3 x .250	Contains NON-Threaded Center Hole Only (3/16"): NO Countersink (6463-T66)
B-400-TCH	4 x .375	Contains NON-Threaded Center Hole Only (5/16"): NO Countersink (6463-T66)
57678-14A	4.5 x .375	3 Holes (5/16"): Countersunk (6061-T6)
57678-13A	6 x .250	3 Holes (5/16"): NO Countersink; NO Center Hole (6061-T6)
57678-11A	6 x .375	3 Holes (5/16"): Countersunk; 2" Center hole (6061-T6)



57678-11A

Round Pads - MILL FINISH - Standard Edge

Stock Code	Size (Inches)	Description
57678-15M	4.5 x .250	3 Holes (5/16"): NO Countersink (6463-T66)
57678-12M	6 x .250	3 Holes (5/16"): NO Countersink; 2" Center Hole (6061-T6) - Backing Plate



57678-7A

Rectangular (Oblong/Shape) Pads - Bright Dipped BRUSHED

Stock Code	Size (Inches)	Description
57678-4A	4 x 6 x .375	4 Holes (5/16"): NO Countersink (6463-T66)
57678-5A	4 x 6 x .375	4 Holes (5/16"): Countersunk (6463-T66)
SPECIAL ORDER	4 x 6 x .375	4 Holes (5/16"): NO Countersink; 2" Center Hole 6463-T66 - (57678-6A)
SPECIAL ORDER	4 x 6 x .375	4 Holes (5/16"): Countersunk; 2" Center Hole 6463-T66 - (57678-7A)
57678-2AA	4 x 12 x .375	6 Holes (5/16"): NO Countersink (6463-T66)
57678-8A	4.5 x 6 x .375	4 Holes (5/16"): Countersunk (6061-T6)



57678-2AA



57678-8A

57678-4M

Rectangular (Oblong/Shape) Pads - 6463-T66 - MILL FINISH

Stock Code	Size (Inches)	Description
57678-9M	4 x 6 x .250	4 Holes (5/16") and 2" Center Hole: NO Countersink
SPECIAL ORDER	4 x 6 x .375	4 Holes (5/16"): NO Countersink - (57678-4M)
SPECIAL ORDER	4 x 12 x .375	6 Holes (5/16"): NO Countersink; 2 - 2" Center Holes - (57678-1M)
SPECIAL ORDER	4.5 x 6 x .250	4 Holes (5/16"): NO Countersink; 2 - 2" Center Holes - (57678-10)

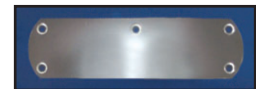


57678-1M

Poling Platform Mounting Pad - Bright Dipped - POLISHED

Stock Code	Size (Inches)	Description
PPMP	3 x 10 x .25	5 Holes

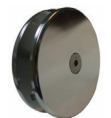
Poling Platform Mounting Pad



4" Round Hard Top Mounting Pad - Bright Dipped - POLISHED

Stock Code	Size (Inches)	Description
4RHTMP	4 x .375	(3/8" thread) Sold in set of 2 pads; Hardware NOT included.

4" Round Hard Top Mounting Pad (2 pads)



Hard Top Mounting Pad - Bright Dipped - POLISHED

Stock Code	Size (Inches)	Description
HTMP	4 x 12.875 x .375	8 Holes

Hard Top Mounting Pad



Leaning Post Pad - Bright Dipped - POLISHED

Stock Code	Size (Inches)	Description
LPP-21625	2 x 16	6 Holes

Leaning Post Pad



Marine 12



EMS FL

1-800-432-2204

(561) 588-4780 - fax

EMS NC

1-800-343-8154

(704) 391-2267 - fax

EMS TX

1-800-996-6061

(281) 656-2297 - fax

EMS MO

1-888-822-6061

(314) 344-3349 - fax

Additional Locations: West Palm Beach & Lakeland, FL; Newark, DE; Akron, OH, Van Buren, AR; Atlanta, GA and Dallas, TX

info@EasternMetal.com • www.EasternMetal.com • www.TigressOutriggers.com

version: 08/09/16