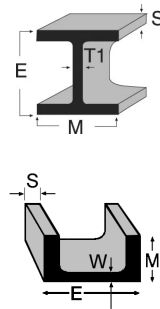


Boat Lift Extrusions and Accessories

Structural Aluminum I-Beam (Aluminum Association)

6061-T6 x 25' Stock Code	Size in Inches (E x M x S / T1)	Approx. Wt/Lin ft.
MILL ORDER	3.00 x 2.50 x .20 / .13 (16-61-2001 NC)	1.637
16-61-205	3.00 x 2.50 x .26 / .15	2.030
16-61-210	4.00 x 3.00 x .23 / .15	2.331
52-61-3219	4.00 x 3.00 x .29 / .17	2.793
16-61-220	5.00 x 3.50 x .32 / .19 (25')	3.700
16-61-225	6.00 x 4.00 x .29 / .19	4.030
52-61-2036	6.00 x 4.00 x .35 / .21 (11')	4.700
16-61-230	6.00 x 4.00 x .35 / .21	4.700
25-61-599	Pulley Ear Bracket x 12' (6005; for 6 x 4 I-Beams)	
16-61-235	7.00 x 4.50 x .38 / .23	5.800
52-61-1700	8.00 x 5.00 x .35 / .23 (12' 6")	6.307
16-61-240	8.00 x 5.00 x .35 / .23	6.307
52-61-2026	8.00 x 5.00 x .41 / .25 (12' 6")	7.023
52-61-775	8.00 x 5.00 x .41 / .25	7.023
52-61-4255	8.00 x 5.00 x .41 / .25 (26')	7.023
52-61-791	8.00 x 5.00 x .41 / .25 (30')	7.023
52-61-4409	8.00 x 5.00 x .41 / .25 (32')	7.023
52-61-2312	8.00 x 5.00 x .41 / .25 (40')	7.023
25-61-600	Pulley Ear Bracket x 12' (6005; for 8 x 5 I-Beams)	
16-61-262	9.00 x 5.50 x .44 / .27	8.360
52-61-3121	10.00 x 6.00 x .41 / .25 (14')	8.646
52-61-1408	10.00 x 6.00 x .41 / .25 (16')	8.646
16-61-263	10.00 x 6.00 x .41 / .25 (25')	8.646
16-61-264	10.00 x 6.00 x .41 / .25 (28')	8.646
16-61-265	10.00 x 6.00 x .41 / .25 (32')	8.646
52-61-911	10.00 x 6.00 x .50 / .29 (25')	10.286
52-61-1410	10.00 x 6.00 x .50 / .29 (32')	10.286
52-61-1389	10.00 x 6.00 x .50 / .29 (40')	10.286
25-61-601	Pulley Ear Bracket x 12' (6005; for 10 x 6 I-Beams)	
52-61-2382	12.00 x 7.00 x .47 / .29	11.672
52-61-1171	12.00 x 7.00 x .62 / .31 (20')	14.292
52-61-1855	12.00 x 7.00 x .62 / .31	14.292
52-61-2301	12.00 x 7.00 x .62 / .31 (32')	14.292
52-61-2872	12.00 x 7.00 x .62 / .31 (40')	14.292
16-61-266	12.00 x 7.00 x .62 / .31 (50')	14.292
16-61-270 - NEW!	14.00 x 8.00 x .60 / .30 (30')	15.967



Structural Aluminum Channel (Aluminum Association)

6061-T6 x 25' Stock Code	Size in Inches (E x M x S / F)	Approx. Wt/Lin ft.
13-61-500	2 x 1 x .130 / .130	0.577
13-61-503	2 x 1.25 x .260 / .170 (20')	1.071
13-61-510	3 x 1.50 x .200 / .130	1.135
13-61-515	3 x 1.75 x .260 / .170	1.597
13-61-520	4 x 2 x .230 / .150	1.738
13-61-525	4 x 2.25 x .290 / .190	2.331
52-61-3728	5 x 2.25 x .260 / .150 (x 12' 9")	2.212
52-61-440	5 x 2.25 x .150 / .260 (20')	2.212
13-61-530	5 x 2.25 x .260 / .150	2.212
13-61-535	5 x 2.75 x .320 / .190	3.089
13-61-540	6 x 2.50 x .290 / .170	2.834
52-61-3427	6 x 2.50 x .290 / .170 (x 12' 6")	2.834
13-61-541	6 x 2.50 x .290 / .170 (14' 6")	2.834
52-61-3729	6 x 3.25 x .350 / .210 (x 12' 9")	4.030
13-61-545	6 x 3.25 x .350 / .210	4.030
13-61-575	7 x 2.75 x .290 / .170	3.205
52-61-1450	7 x 2.75 x .290 / .170 (15' 6")	3.205
52-61-0017	7 x 2.75 x .290 / .170 (x 17')	3.205
52-61-593	7 x 3.50 x .380 / .210	4.715
13-61-560	8 x 3 x .350 / .190	4.147
52-61-4329	8 x 3 x .350 / .190 (40')	4.147
52-61-1707	8 x 3.75 x .410 / .250 (x 14' 9")	5.787
13-61-561	8 x 3.75 x .410 / .250 (15')	5.787
52-61-1503	8 x 3.75 x .410 / .250 (x 16' 9")	5.787
13-61-563	8 x 3.75 x .410 / .250	5.787
13-61-562	8 x 3.75 x .410 / .250 (32')	5.787
13-61-564	8 x 3-3/4 x .410 / .250 (40')	5.787
MILL ORDER	9 x 3.25 x .350 / .230 (13-61-585 - NC)	4.983
MILL ORDER	9 x 4 x .440 / .240 (13-61-590 - NC)	6.970
13-61-571	10 x 3.5 x .410 / .250 (40')	6.136
13-61-572	10 x 3.5 x .410 / .250 (45')	6.136
MILL ORDER	10 x 4-1/4 x .500 / .310 (52-61-2272)	8.360
MILL ORDER	12 x 4 x .470 / .290 (13-61-580 - TX)	8.274
MILL ORDER	12 x 5 x .620 / .350 (51-61-107)	11.822

Grip Rail - **NEW!**

Stock Code	Description
GR-12	12" Polished & Anodized
GR-14	14" Polished & Anodized
GR-18	18" Polished & Anodized
GR-24	24" Polished & Anodized
GR-36	36" Polished & Anodized
GRM-12	12" Mill Finish
GRM-14	14" Mill Finish
GRM-18	18" Mill Finish
GRM-24	24" Mill Finish
GRM-36	36" Mill Finish



Grip Rail

Items marked as MILL ORDER are non stock but available.
Product codes listed on MILL ORDER items are for die reference only.
Customer must specify length, alloy & temper.

Standards 30



EMS FL

1-800-432-2204
(561) 588-4780 - fax

EMS NC

1-800-343-8154
(704) 391-2267 - fax

EMS TX

1-800-996-6061
(281) 656-2297 - fax

EMS MO

1-888-822-6061
(314) 344-3349 - fax

Eastern Metal Supply

Quality Shapes In Aluminum

Additional Locations: West Palm Beach & Lakeland, FL; Newark, DE; Akron, OH, Van Buren, AR; Atlanta, GA and Dallas, TX

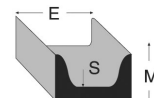
website: www.EasternMetal.com

e-mail: info@EasternMetal.com

version: 07/10/19

Boat Lift Extrusions and Accessories

Structural Aluminum Channel - 6061-T6 x 25' (American Standard)

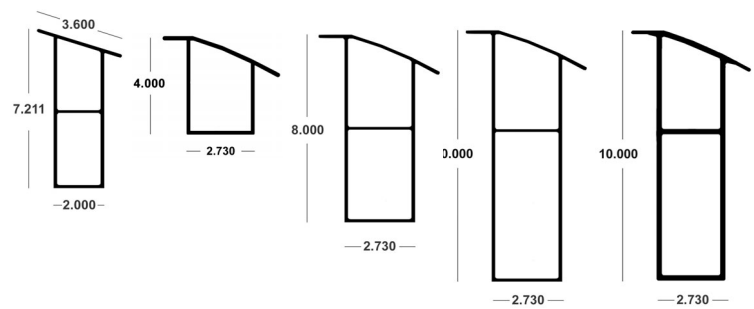


Stock Code	(E x M x S / F) Size in Inches	Approx. Wt/Lin ft.	Stock Code	(E x M x S / F) Size in Inches	Approx. Wt/Lin ft.
13-61-200	3 x 1.41 x .170	1.417	13-61-275	8 x 2.29 x .250	4.252
13-61-205	3 x 1.498 x .258	1.729	MILL ORDER 13-61-280 (NC)	8 x 2.343 x .303	4.951
13-61-210	3 x 1.596 x .356	2.074	MILL ORDER 13-61-285 (NC)	8 x 2.435 x .395	5.617
13-61-215	4 x 1.58 x .180	1.846	13-61-290	8 x 2.527 x .487	6.484
13-61-220 (TX)	4 x 1.647 x .247	2.161	MILL ORDER	9 x 2.43 x .230	4.604
13-61-216	4 x 1.72 x .320	2.504	MILL ORDER 13-61-668 (NC)	9 x 2.648 x .448	6.911
13-61-230	5 x 1.75 x .190	2.316	13-61-310	10 x 2.6 x .240	5.278
13-61-235	5 x 1.885 x .325	3.108	MILL ORDER 52-61-561	10 x 2.739 x .379	6.915
MILL ORDER 52-61-802	5 x 2.032 x .472	3.975	13-61-320	10 x 2.886 x .526	8.641
13-61-245	6 x 1.920 x .200	2.826	13-61-325	12 x 2.960 x .300	7.415
MILL ORDER 13-61-250 (NC)	6 x 1.945 x .225	3.002	52-61-455	12 x 3.047 x .387	8.644
52-61-1080	6 x 2.034 x .314	3.631	MILL ORDER 52-61-420	12 x 3.17 x .510	10.374
MILL ORDER 52-61-419	6 x 2.157 x .437	4.498	MILL ORDER 52-61-025	15 x 3.40 x .400	11.708
MILL ORDER 13-61-265 (NC)	7 x 2.110 x .230	3.541			
MILL ORDER 52-61-4138	7 x 2.194 x .314	4.232			

Bunks

52-63-6513	19° Extruded Bunk x 12'	2.347
40-63-230	19° Extruded Bunk x 20'	2.347
40-63-235	19° Extruded Bunk x 24'	2.347
40-63-271	4" Universal x 24'	1.626
40-63-280	8" Universal x 10' (Flat, 19°, 24°, 28°)	2.898
40-63-273	8" Universal x 12' (Flat, 19°, 24°, 28°)	2.898
40-63-274	8" Universal x 14' (Flat, 19°, 24°, 28°)	2.898
40-63-276	8" Universal x 16' (Flat, 19°, 24°, 28°)	2.898
40-63-275	8" Universal x 24' (Flat, 19°, 24°, 28°)	2.898
40-63-282	10" Universal Bunk x 10'	3.759
40-63-281	10" Universal Bunk x 12'	3.759
40-63-279	10" Universal Bunk x 14'	3.759
40-63-277	10" Universal Bunk x 16'	3.759
40-05-277	10" HD Universal Bunk x 16'	6.326 - (6005A T61) NEW!
40-05-278	10" HD Universal Bunk x 24'	6.326 - (6005A T61) NEW!
40-63-278	10" Universal Bunk x 24'	3.759
1-00-005	3.6 x 1.5 Flat Trailer Bunk x 24'	1.172
21-00-712R	End Cap Casting (Right) for 8" Universal Boat Bunk	
21-00-712L	End Cap Casting (Left) for 8" Universal Boat Bunk	
13-63-270	2-1/4 x 7/8 x 1/8 x 20' Channel	0.563 (used as end caps for 19° Extruded Bunk)
13-63-285	3 x 1 x 1/8 x 20' Channel	0.713 (used as end caps for 8" & 10" Universal Bunk)

(below: left to right) 19° Extruded Bunk • 4" Universal Boat Bunk
8" Universal Boat Bunk • 10" Universal Boat Bunk • 10" HD Universal Boat Bunk



NEW!



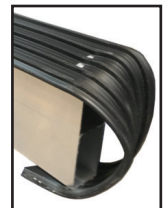
Flat Trailer Bunk

Pre-fabbed Bunks - Bunk supplied with vinyl pad (40-63-2401) and end caps on both ends, attached with aluminum rivets.

4" Universal Pre-Fabbed Bunk	10" Universal Pre-Fabbed Bunk
40-63-271F 6'	40-63-282F 10'
40-63-271F8 8'	40-63-281F 12'
40-63-271F12 12'	40-63-279F 14'
8" Universal Pre-Fabbed Bunk	40-63-277F 16'
40-63-270F 8'	40-05-277F 16' HD (6005A T61) NEW!
40-63-280F 10'	40-63-283F 18'
40-63-273F 12'	
40-63-274F 14'	19° Extruded Pre-Fabbed Bunk (without end caps)
40-63-276F 16'	52-63-6513F 12' Pre-Fabbed Bunk NEW!



Pre-Fabbed Bunk (Universal)



Pre-Fabbed Bunk (19° Extruded) No End Caps

Standards 31



EMS FL

1-800-432-2204
(561) 588-4780 - fax

EMS NC

1-800-343-8154
(704) 391-2267 - fax

EMS TX

1-800-996-6061
(281) 656-2297 - fax

EMS MO

1-888-822-6061
(314) 344-3349 - fax

Eastern Metal Supply

Quality Shapes In Aluminum

Additional Locations: West Palm Beach & Lakeland, FL; Newark, DE; Akron, OH, Van Buren, AR; Atlanta, GA and Dallas, TX

website: www.EasternMetal.com • e-mail: info@EasternMetal.com version: 04/17/18

Boat Lift Extrusions and Accessories

Bunk Pad

Stock Code

40-63-2400

40-63-2401

Description

Black Vinyl x 100' coils

Universal Bunk Pad Black Vinyl x 100' (Flat, 19°, 24°, 28°)

Universal Bunk End Caps

UNVBUNK

Left and Right Universal Bunk End Caps; Black Nylon

Bunk Bracket

40-63-430

4" Universal Bunk Bracket x 5"

40-63-225

2 x 5-3/4 x .300 x 5"

40-63-220

2 x 8 x .300 x 5"

40-63-218

2 x 10 x .300 x 5"

52-61-002

Adjustable Bunk Bracket x 12"

52-61-0025

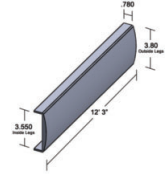
Adjustable Bunk Bracket x 5"
(with 4 holes)



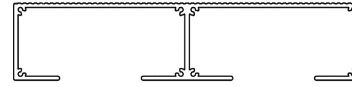
4" Universal Bunk Bracket



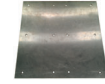
Bunk Bracket, Bunk and Bunk Pad



16" Walkboard End Cap



16" Walkboard



16" Walkboard Stiffener

Walkboards

3-1/2 x 16" Walk Board - NEW!

Custom Lengths Available;

Sandblasted Finish Available as Special Order

30-61-312

x 12'

30-61-314

x 14'

30-61-316

x 16'

30-61-318

x 18'

30-61-320

x 20'

30-61-324

x 24'

30-61-330

x 30'

30-EC-000

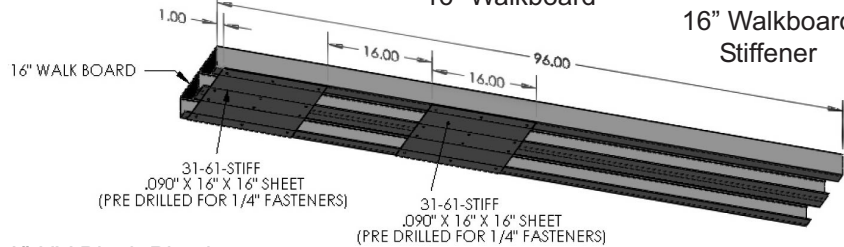
16" Walk Board End Cap x 12' 3" UV Black Plastic

31-61-STIFF

16" Walk Board Stiffener (.090 x 16" x 16") Predrilled with 1/4" holes

7' - 8' Free Span Application Requires 2 Stiffeners 16" apart • **8' to 10' Free Span Application** Requires 3 Stiffeners 16" apart

Start the first Stiffener 1" from the end of span to allow for End Cap.



30-63-112

12" Dock Flooring x 24' 1" (6005-T5 MF Knurled)

52-63-4283

11-1/2" Bleacher Plank x 16' (B-2) 2.130

52-63-6118

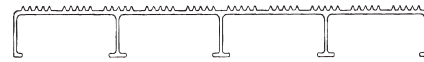
11-1/2" Bleacher Plank x 20' (B-2) 2.130

52-63-13304

11-1/2" Bleacher Plank x 24' (B-2) 2.130

52-63-6786

Bleacher Plank End Cap x 12' 0.332



Walkboard - 12" Dock Flooring



11-1/2" Bleacher Plank

Bleacher Plank End Cap

Miscellaneous Accessories

Stock Code

25-61-599

6" Pulley Bracket x 12' (6005; use with all 6" I-Beams)

25-61-600

8" Pulley Bracket x 12' (6005; use with all 8" I-Beams)

25-61-601

10" Pulley Bracket x 12' (6005; use with all 10" I-Beams)

PULLEY-BRACK-6

6" Machined Pulley Bracket (6005; use with all 6" I-Beams)

PULLEY-BRACK-8

8" Machined Pulley Bracket (6005; use with all 8" I-Beams)

PULLEY-BRACK-10

10" Machined Pulley Bracket (6005; use with all 10" I-Beams)

PULLEY-COMBO-6

6" Machined Pulley Bracket (6005) with Pulley & Bolt

PULLEY-COMBO-8

8" Machined Pulley Bracket (6005) with Pulley & Bolt

PULLEY-COMBO-10

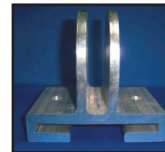
10" Machined Pulley Bracket (6005) with Pulley & Bolt

PULLEY-4DIA

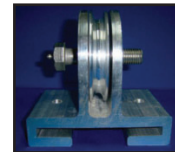
4" Pulley w/bronze oil lite bushing

PULLEY-BOLT

3/4" x 3-1/2" Stainless Axle Bolt w/ Zerk grease fitting



Pulley Brackets



Pulley Combos

Cable Winders - Please check with your EMS Sales Rep for other available sizes

CWL

2 x 15-3/4 Cable Winder - Left Hand

CWR

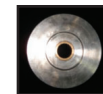
2 x 15-3/4 Cable Winder - Right Hand

CWL-18 - NEW!

2 x 18 Cable Winder - Right Hand, 1 hole at each end

CWL-18 - NEW!

2 x 18 Cable Winder - Left Hand, 1 hole at each end



4" Pulley



Axle Bolt

Aluminum Tubes for Cable Winders

52-61-3149

3" OD x 2.415" ID x 20' (6061-T6) 2.986

25-61-300

3" OD x 1.920" ID x 20' (6061-T6) 5.000



Cable Winder

Standards 32



EMS FL

1-800-432-2204

(561) 588-4780 - fax

EMS NC

1-800-343-8154

(704) 391-2267 - fax

EMS TX

1-800-996-6061

(281) 656-2297 - fax

EMS MO

1-888-822-6061

(314) 344-3349 - fax

Eastern Metal Supply

Quality Shapes In Aluminum

Additional Locations: West Palm Beach & Lakeland, FL; Newark, DE; Akron, OH, Van Buren, AR; Atlanta, GA and Dallas, TX

website: www.EasternMetal.com

e-mail: info@EasternMetal.com

version: 06/19/19