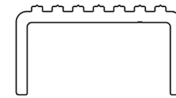


Ladder Rung Extrusions

Ladder Rung

40-05-100	2 x 1 Ladder Rung x 20'	0.622
MILL ORDER <i>40-05-105K</i>	2 x 1 Ladder Rung (Knurled)	0.622



Ladder Rung



3" Knurled Ladder Rung

25-BD-226	3" Knurled Ladder Rung x 12' (6005A T61 BDA)
<u>DVLDR</u>	Black Dive Ladder End Caps; Mates with 25-BD-226

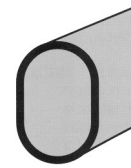


Ladder End Cap: DVLDR

Oval Tube x 20' (6463-T67) - Commonly used as Ladder Steps

Available: Polished and Bright Dipped, Brushed and Bright Dipped and Mill Finish

<u>Stock Code</u>	<u>Size in Inches</u>	<u>Lgths./Box</u>
52-63-6354	1 x 1-1/2 (Mill Finish)	10
25-BD-200	1 x 1-1/2 (BDA Polished)	10
25-BR-200	1 x 1-1/2 (BDA Brushed)	10
25-MF-220	1 x 1-7/8 (Mill Finish) x 22'	8
25-BR-205	1 x 1-7/8 (BDA Brushed)	8
25-BD-205	1 x 1-7/8 (BDA Polished)	8
<u>25-BD-208</u>	1-1/4 x 2-3/8 (BDA Polished)	6
25-BD-210	1-1/4 x 3 (BDA Polished)	6
25-BR-210	1-1/4 x 3 (BDA Brushed)	6
25-MF-210	1-1/4 x 3 (Mill Finish)	6
25-BD-215	1-1/4 x 4 (1/8" wall - BDA Polished)	4
25-BR-215	1-1/4 x 4 (1/8" wall - BDA Brushed)	4
25-64-216	1-1/4 x 4 (1/8" wall - Mill Finish)	4
<u>25-BRW-217</u>	1-1/4 x 4 (.140" wall - BDA Brushed)	4



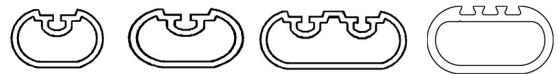
Polished and Bright Dipped



Oval Tube End Caps

Oval Tube End Caps

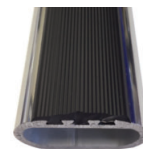
AOC-150	1 x 1.50 Oval End Cap BDA - NEW!
AOC-150-MF	1 x 1.50 Oval End Cap Mill Finish - NEW!



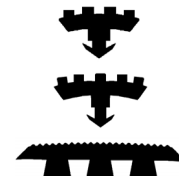
Slotted Oval Tubes (left to right):
25-BD-250, 25-BD-255, 25-BD-212, 25-BD-206

Slotted Oval Tube x 20' (Polished and Bright Dipped 6463-T67)

25-BD-250	1 x 1-1/2 (small insert VI-SM)	10
25-BD-255	1 x 1-7/8 (large insert VL-LG)	8
<u>25-BD-212</u>	1-1/4 x 3 (double slot; small insert VI-SM)	6
<u>25-BD-206</u>	1 x 1-7/8 (3 slots 40-63-2060; polished)	8
<u>25-MF-206</u>	1 x 1-7/8 (3 slots 40-63-2060; Mill Finish)	8



3 Slotted Oval Tube with Insert



Insert Material (top to bottom):
VI-SM, VI-LG, 40-63-2060

Insert Material

<u>VI-SM</u>	1-1/2 (mates with 25-BD-250 & 25-BD-212)
<u>VI-LG</u>	1-7/8 (mates with 25-BD-255)
40-63-2060	3 Groove Tread Insert (bagged 20' sections; mates with 25-BD/MF-206)

Polished and Bright Dipped Oval Tube with Ribs x 20' (6463-T66)

<u>25-BD-225</u>	1 x 1-1/2 (3 Ribs)	10
25-BD-245	1 x 1-1/2 (7 Ribs)	10

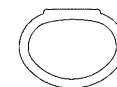


Polished and Bright Dipped Oval
(3 Ribs: left; 7 Ribs: right)

Polished and Bright Dipped Oval Tube x 20' - Non Skid (6463-T67)

Non-Skid Finish on Both Flat Surfaces, All other surfaces are Polished

25-NS-200	1 x 1-1/2 (Non Skid)	10
25-NS-205	1 x 1-7/8 (Non Skid)	8
<u>25-NS-215</u>	1.29 x 1.757 Tower Step x 20'	8



Tower Step

Items marked as MILL ORDER are non stock but available.

Product codes listed on MILL ORDER items are for die reference only.

Customer must specify length, alloy & temper.

Standards 16



EMS FL

1-800-432-2204
(561) 588-4780 - fax

EMS NC

1-800-343-8154
(704) 391-2267 - fax

EMS TX

1-800-996-6061
(281) 656-2297 - fax

EMS MO

1-888-822-6061
(314) 344-3349 - fax

Eastern Metal Supply

Quality Shapes In Aluminum

Additional Locations: West Palm Beach & Lakeland, FL; Newark, DE; Akron, OH, Van Buren, AR; Atlanta, GA and Dallas, TX

website: www.EasternMetal.com

e-mail: info@EasternMetal.com

version: 01/09/19