



## Aluminum Woven Wire Mesh - **NEW!**

1.75" ID; 2.00" OD

Alloy 1350 - H16; Open Area - 77%

50-WWM-4896 .236 x 48 x 96 21.12 #/sheet

50-WWM-48120 .236 x 48 x 120 26.40 #/sheet

### Typical Uses:

Railing Projects • Parking Garages  
Security Cages • Decorative Screening

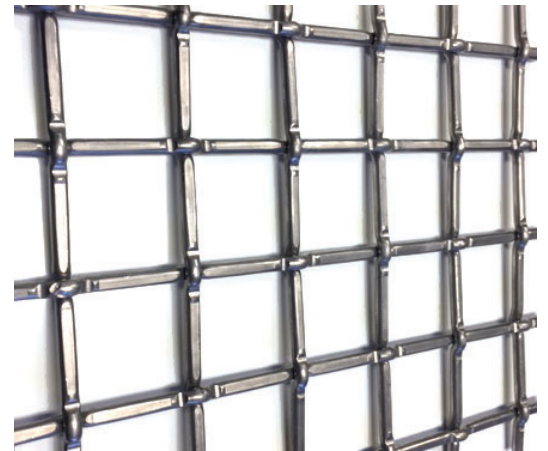
### Framing Options:

**13-63-205** 1/2 x 3/4 x 1/8  
Channel x 20'  
0.263 #/ft

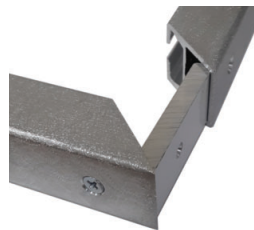
**60-00-205** MP-1A (1 x 1 x 24')  
**59-63-002 (TX)** MP-1A (1 x 1 x 24')

MP-1A can be inserted into the 3" Universal and 2 x 3 Welded Enclosure Systems (pic at far right).

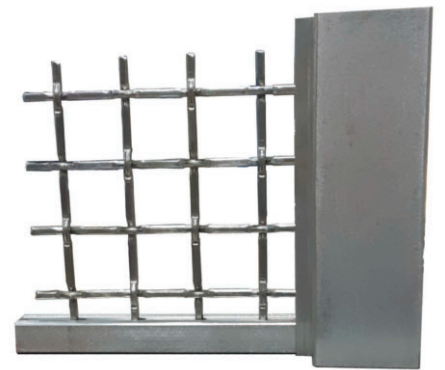
2 x 2 Angle cut down to 0.800 can be used as Corner Key for Mechanical Installations



Wire Mesh Framed out with 1" MP-1A



2 x 2 x .80 Corner Key inserted into MP-1A mechanically fastened



Wire Mesh Framed out with 1" MP-1A and inserted into 3" Universal Enclosure Post



**Frequently Purchased with:**  
• Universal Enclosure System  
• 2 x 3 Enclosure System

