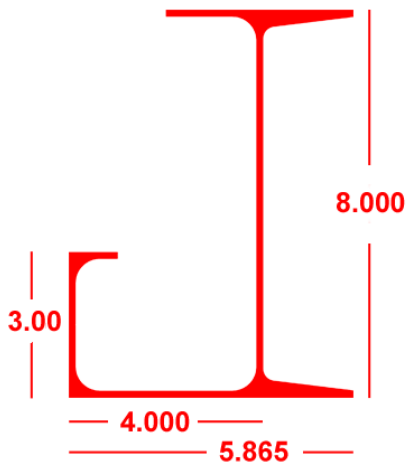


Front Gutter Fascia removed to display interior components of canopy

4 x 8 x 3 x .135 Gutter Fascia  
Combination x 24' 1"  
56-63-047 Mill Finish

**COMING OCT 2019!**



### Features & Benefits

- Channel Fascia incorporated into the Gutter with a one piece design
- Significant labor savings
- No seams on the front of the Canopy Fascia
- Achieves retro industrial channel fascia appearance



**Eastern Metal Supply** [www.easternmetal.com](http://www.easternmetal.com) • [info@easternmetal.com](mailto:info@easternmetal.com)

FL: 800-432-2204 • NC/DE/GA: 800-343-8154 • TX/AR: 800-996-6061 • MO/OH: 888-822-6061 v10/19

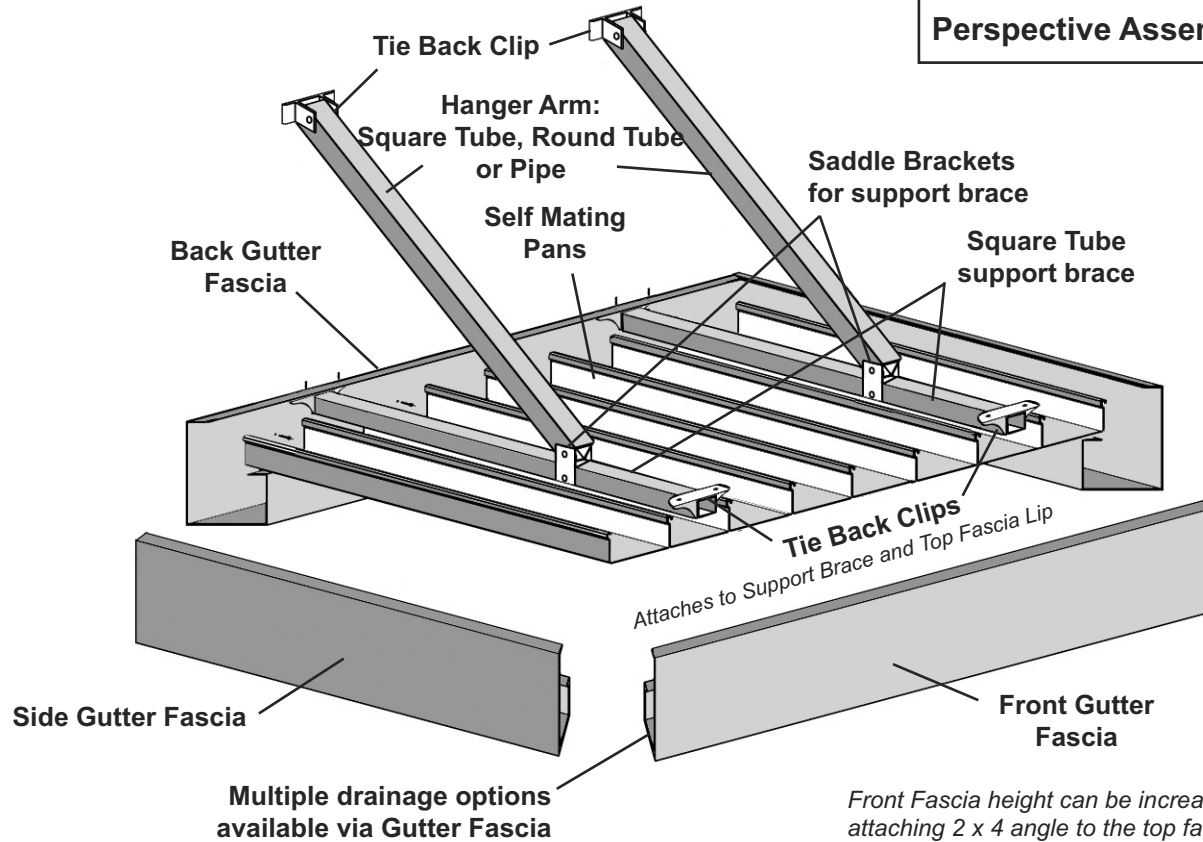
### Architectural Canopy Schematic

Available in: Mill Finish & Anodized; Various Lengths & Alloys

**ENGINEERING AVAILABLE:**

[www.easternmetalingeering.com](http://www.easternmetalingeering.com)

**Architectural Canopy:  
Perspective Assembly**



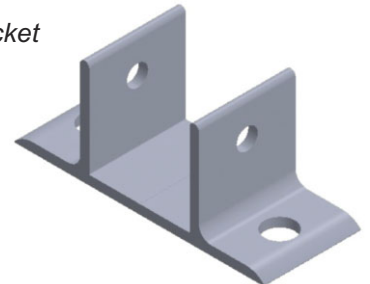
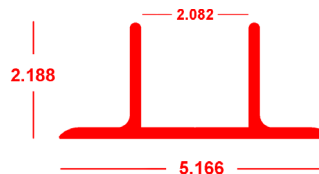
**2 x 8 Self Mating Canopy  
Roof Pan x 24'**  
6063-T6 Mill Finish  
56-63-046 (0.065 - Light Wall)



### Also Available:

#### Tie Back Clips

6063-T6 Mill Finish  
x 2" TB-CLIP (with holes) - **COMING OCT 2019!**  
x 12' 40-63-262  
Receives 2" Square Tube;  
Also used as support brace bracket



**Eastern Metal Supply** [www.easternmetal.com](http://www.easternmetal.com) • [info@easternmetal.com](mailto:info@easternmetal.com)

FL: 800-432-2204 • NC/DE/GA: 800-343-8154 • TX/AR: 800-996-6061 • MO/OH: 888-822-6061 v10/19